

# AURELIUS MFG CO INC

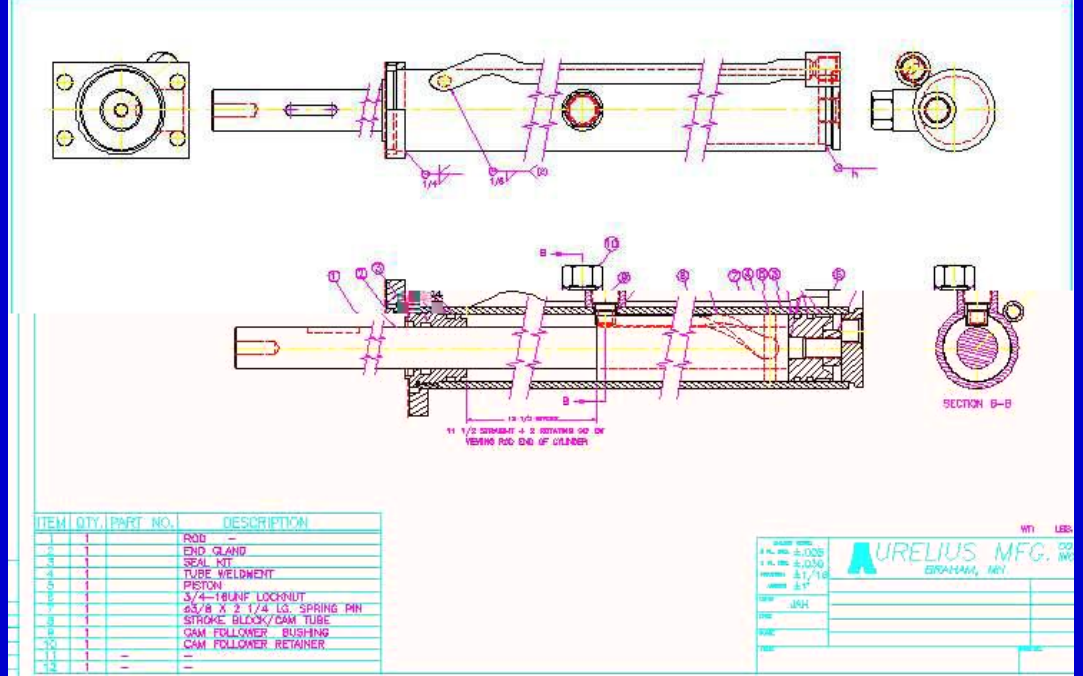
220 S.W. 8TH ST. - P.O. BOX 508  
 BRAHAM, MN 55006  
 320-396-3343 FAX 320-396-3346

## SOLUTION PROFILE



### Custom Welded Hydraulic Cylinders

- Bore - 1 to 6 inches
- Rod - 3/8 to 5 inches  
 • hollows & specials
- Stroke - 0 to 20 feet
- Custom porting
  - NPT
  - S.A.E. - O-ring
  - tube lines
  - specials
- Custom valving
  - pads
  - cavities
- Integrated sensors
  - linear transducers
  - proximity



**Requirement:** Provide a cylinder that would advance straight and rotate 90 degrees in the last few inches of extension.

**Solution:** The cylinder is built with a cam-tube attached to the rod and a follower in the barrel to control the radial position of the rod as required. The follower required refinement to find a configuration that is robust enough to stand up to the rapid cycles of the application. The front flange on the barrel and the rod extension are machined to fit directly into the assembly without the need for adapter brackets.

### Contact Aurelius Mfg. Co., Inc.

Phone: 320-396-3343  
 Fax: 320-396-3346  
 Email: [info@aurelius-mfg.com](mailto:info@aurelius-mfg.com)