

AURELIUS MFG CO INC

220 S.W. 8TH ST. - P.O. BOX 508
 BRAHAM, MN 55006
 320-396-3343 FAX 320-396-3346

SOLUTION PROFILE

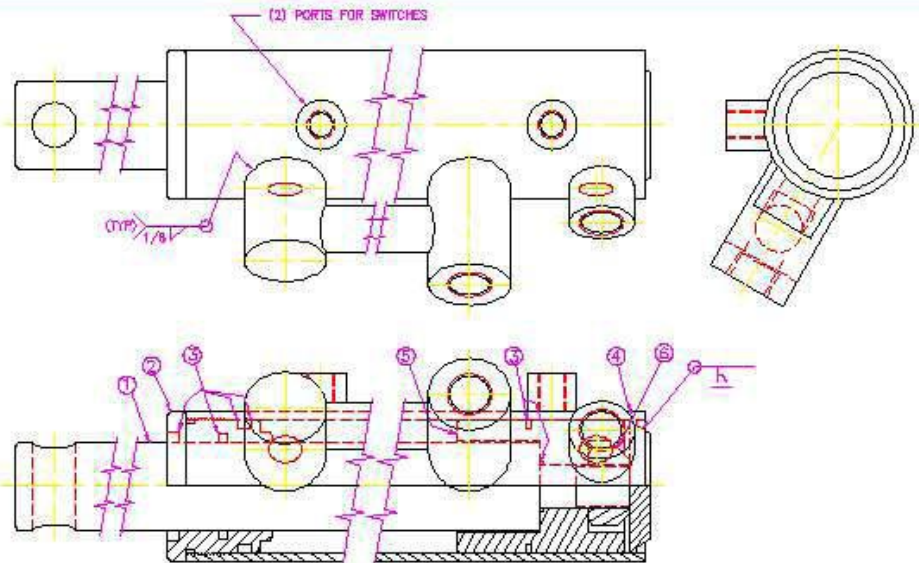


Custom Welded Hydraulic Cylinders

- Bore - 1 to 6 inches
- Rod - 3/8 to 5 inches
 - hollows & specials
- Stroke - 0 to 20 feet
- Custom porting
 - NPT
 - S.A.E. - O-ring
 - tube lines
 - specials
- Custom valving
 - pads
 - cavities
- Integrated sensors
 - linear transducers
 - proximity

Contact
Aurelius Mfg. Co., Inc.

Phone: 320-396-3343
 Fax: 320-396-3346
 Email: info@aurelius-mfg.com



CHROME PLATED #303 STAINLESS STEEL SHAFT

ITEM	QTY.	PART NO.	DESCRIPTION
1	1		SHAFT
2	1		END GLAND
3	1		SEAL KIT
4	1		TUBE WELDMENT
5	1		PISTON
6	1		T-TAUNG LOCKNUT

WEIGHT: _____ LBS.

REVISIONS:

REV.	DATE	BY	DESCRIPTION
1	JAH		

AURELIUS MFG. CO. INC.
 BRAHAM, MN.

Requirement: Provide an electrical signal at each end of the cylinder stroke to work with the parent assembly's circuit logic and provide a durable, reciprocating assembly. Trip rods and limit switches had been used in the past but resulted in maintenance problems associated with the moving rods and exposed switches.

Solution: This cylinder incorporates ports and targets that work with GoSwitches to detect the end of the stroke. No extra moving parts are required and the switches are simple and durable. A tube-line was added to clean up the plumbing and create a streamlined assembly and assembly process. The improved assembly reduces costs by eliminating the brackets and trip rods as well as reducing the field service that was required to keep the previous design running.