

# AURELIUS MFG CO INC

220 S.W. 8TH ST. - P.O. BOX 508  
 BRAHAM, MN 55006  
 320-396-3343 FAX 320-396-3346

## SOLUTION PROFILE

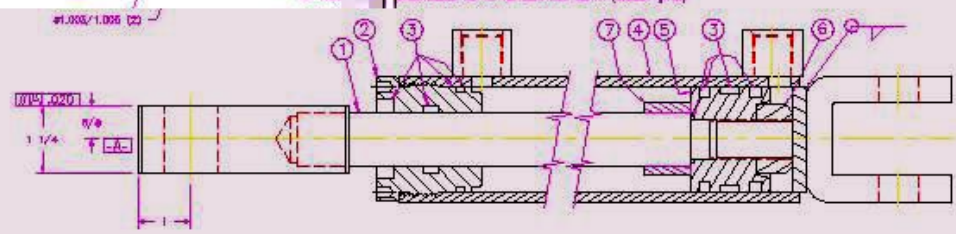
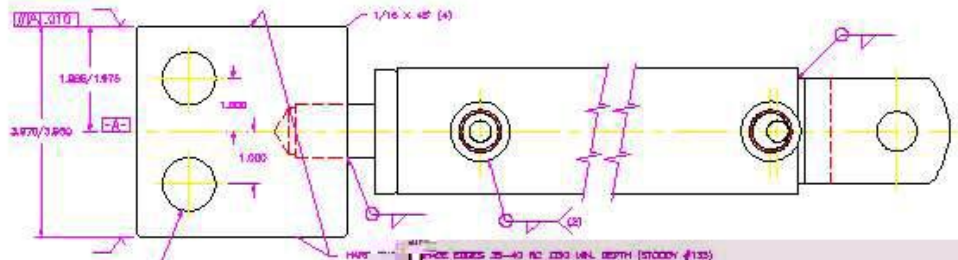


### Custom Welded Hydraulic Cylinders

- Bore - 1 to 6 inches
- Rod - 3/8 to 5 inches  
 • hollows & specials
- Stroke - 0 to 20 feet
- Custom porting
  - NPT
  - S.A.E. - O-ring
  - tube lines
  - specials
- Custom valving
  - pads
  - cavities
- Integrated sensors
  - linear transducers
  - proximity

**Contact**  
**Aurelius Mfg. Co., Inc.**

Phone: 320-396-3343  
 Fax: 320-396-3346  
 Email: info@aurelius-mfg.com



ITEM	QTY.	PART NO.	DESCRIPTION
1	1		SHAFT WELDMENT (DWG)
2	1		END GLAND
3	1		SEAL KIT
4	1		TUBE WELDMENT
5	1		PISTON
6	1		3/4-18UNF LOCKNUT
7	1		STROKE BLOCK

WT: LBS.

AURELIUS MFG. CO. INC.  
 BRAHAM, MN.

DESIGNED BY: JAH  
 DATE: \_\_\_\_\_  
 TITLE: \_\_\_\_\_

**Requirement:** Improve the design of an assembly using a cylinder to drive a slide with rapid cycles. The original design made it difficult to keep the joint between the slide and the cylinder tight and properly aligned.

**Solution:** The cylinder was redesigned to incorporate a portion of the slide assembly as an integral part of the cylinder rod by providing hard-surfacing and the required machined shape. This change has increased reliability, lowered the overall cost and simplified the assembly process.